



# LUMINAIRE TESTING LABORATORY, INC.

SUSTAINING  
MEMBER  
of the  
IESNA

905 Harrison Street · Allentown, PA 18103 · 610-770-1044 · Fax 610-770-8912 · www.LuminaireTesting.com

LTL NUMBER: 09300

DATE: 10-11-2005

PREPARED FOR: ENERCON/HIBRITE INTERNATIONAL

CATALOG NUMBER: HF8-4

LUMINAIRE: FORMED STEEL HOUSING, FORMED SPECULAR ALUMINUM REFLECTOR,  
NO ENCLOSURE.

LAMPS: FOUR 32 WATT T8 LINEAR FLUORESCENT LAMPS RATED AT 2950 LUMENS  
EACH.

LAMP CATALOG NUMBER: PHILIPS F32T8/TL850/PLUS/ALTO

BALLAST: ONE ADVANCE ICN-4P32-SC

MOUNTING: PENDANT

LUMEN TO CANDELA RATIO USED = 9.18

TOTAL INPUT WATTS = 110.3 AT 120.0 VOLTS

THE 0 DEGREE PLANE IS PARALLEL WITH THE LAMPS.

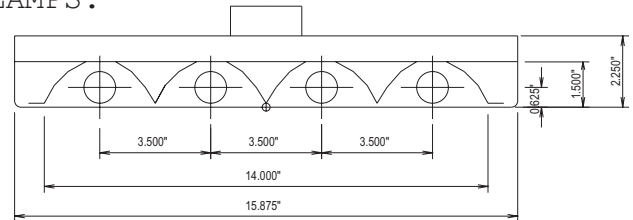
#09300

### CANDELA DISTRIBUTION

	0.0	22.5	45.0	67.5	90.0
0	4866	4866	4866	4866	4866
5	4837	4859	4884	4904	4920
15	4664	4796	4811	4572	4493
25	4321	4469	3995	3771	3721
35	3825	3664	3269	3066	2968
45	3194	2832	2466	2226	2154
55	2465	2037	1651	1468	1503
65	1643	1178	1072	1161	1173
75	812	553	642	669	674
85	118	162	190	206	207
90	0	9	12	25	27

### FLUX

0	468
5	1321
15	1875
25	2095
35	1969
45	1606
55	1189
65	692
75	206
85	27
90	27



### ZONAL LUMEN SUMMARY

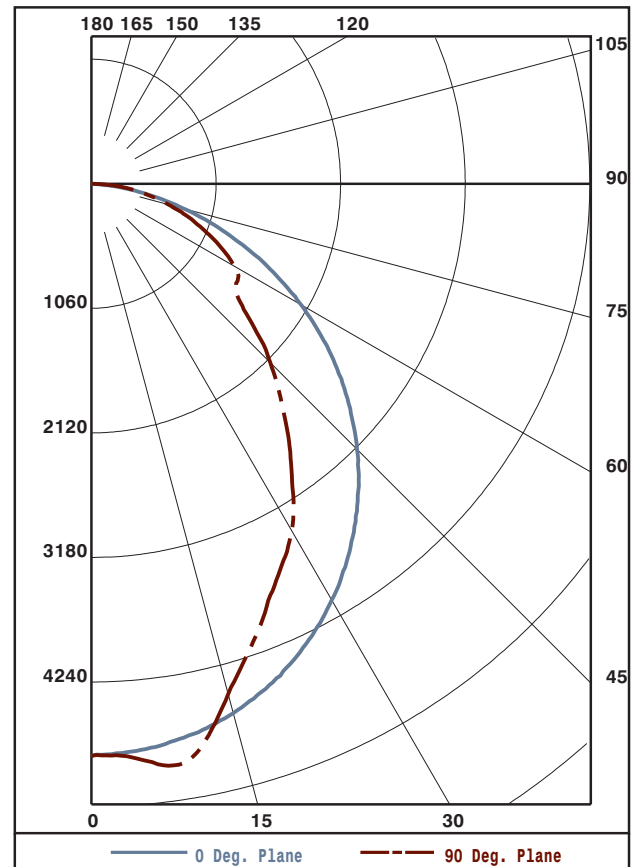
ZONE	LUMENS	%LAMP	%FIXT
0- 30	3663	31.0	32.1
0- 40	5758	48.8	50.4
0- 60	9333	79.1	81.7
0- 90	11420	96.8	100.0
90-180	0	0.0	0.0
0-180	11420	96.8	100.0

TOTAL LUMINAIRE EFFICIENCY: 96.8%

CIE TYPE: DIRECT  
 PLANE: 0-DEG 90-DEG  
 SPACING CRITERIA: 1.2 1.1  
 LUMINOUS LENGTH: 48.250 14.000

### LUMINANCE IN CANDELA PER SQUARE METER

ANGLE IN DEG	AVERAGE 0-DEG	AVERAGE 45-DEG	AVERAGE 90-DEG
0	11165.	11165.	11165.
45	10364.	8002.	6989.
55	9861.	6604.	6012.
65	8920.	5820.	6368.
75	7198.	5691.	5975.
85	3106.	5002.	5449.



TESTED BY HERSCHEL SCHRECK  
 CHECKED BY MIKE GRATHER

THIS REPORT BASED ON LM-41 AND OTHER PERTINENT IESNA PROCEDURES.



LUMINAIRE TESTING LABORATORY, INC.

SUSTAINING MEMBER of the IESNA

905 Harrison Street · Allentown, PA 18103 · 610-770-1044 · Fax 610-770-8912 · www.LuminaireTesting.com

LTL NUMBER: 09300

DATE: 10-11-2005

PREPARED FOR: ENERCON/HIBRITE INTERNATIONAL

COEFFICIENTS OF UTILIZATION - ZONAL CAVITY METHOD
EFFECTIVE FLOOR CAVITY REFLECTANCE 0.20

Table with 10 columns (RC, RW, 80, 70, 50, 30, 10, 0) and 11 rows (0-10) showing utilization coefficients.

CANDELA DISTRIBUTION

Table with 6 columns (0.0, 22.5, 45.0, 67.5, 90.0) and 17 rows (0-90) showing candela values.

ZONAL LUMEN SUMMARY

Table with 3 columns (0-5, 5-10, 10-15, 15-20, 20-25, 25-30, 30-35, 35-40, 40-45, 45-50, 50-55, 55-60, 60-65, 65-70, 70-75, 75-80, 80-85, 85-90) and 17 rows showing lumen values.

THIS TEST WAS CONDUCTED USING RELATIVE PHOTOMETRY TECHNIQUES ACCORDING TO STANDARD IESNA PROCEDURES. THE USER MUST THEREFORE USE CAUTION IN THE FOLLOWING SITUATIONS: 1) THIS TEST WAS PERFORMED USING A SPECIFIC BALLAST/LAMP COMBINATION. EXTRAPOLATION OF THESE DATA FOR OTHER BALLAST/LAMP COMBINATIONS MAY PRODUCE ERRONEOUS RESULTS. 2) ACCORDING TO IESNA PROCEDURES, THE BALLAST(S) AND LAMP(S) ARE PRESUMED TO PRODUCE 100% OF RATED OUTPUT. AN APPROPRIATE BALLAST FACTOR MUST BE APPLIED TO THE LUMEN OUTPUT RATINGS AND LUMINOUS INTENSITY VALUES GIVEN. 3) THIS TEST WAS CONDUCTED IN A CONTROLLED LABORATORY ENVIRONMENT WHERE THE AMBIENT TEMPERATURE WAS HELD AT 25 C ± 1 C. FIELD PERFORMANCE MAY DIFFER PARTICULARLY IN REGARDS TO CHANGE IN LUMINOUS OUTPUT AS A RESULT OF DIFFERENCE IN AMBIENT TEMPERATURE AND METHOD OF MOUNTING THE LUMINAIRE.